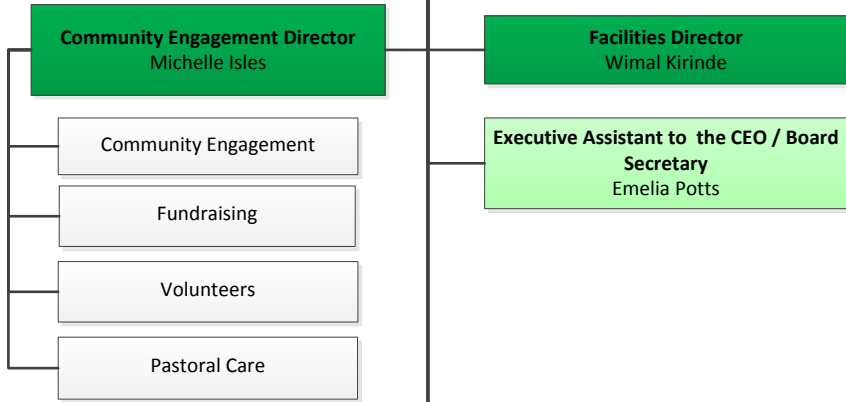




**Bass Coast Health Board of Directors**

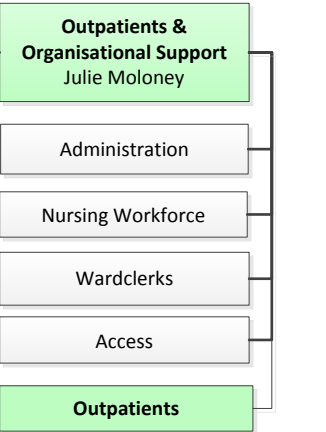
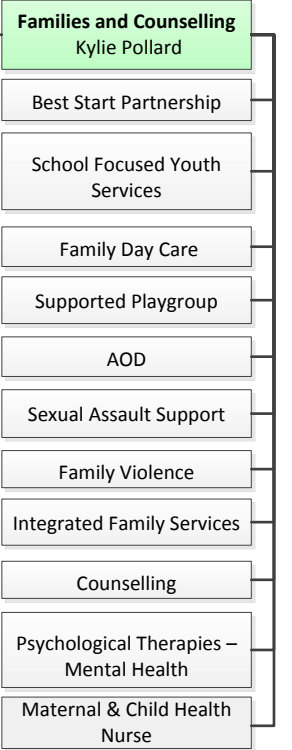
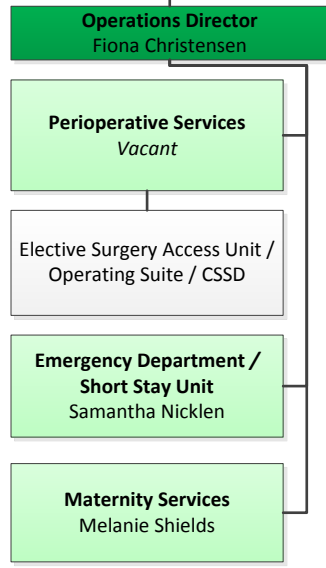
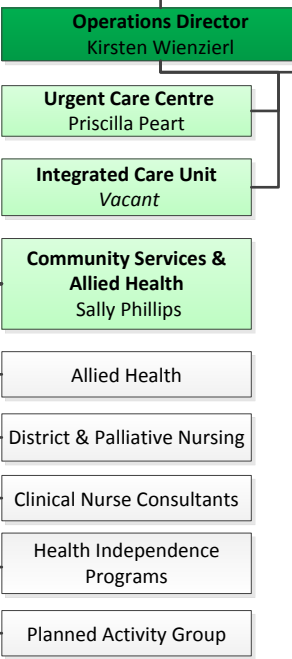
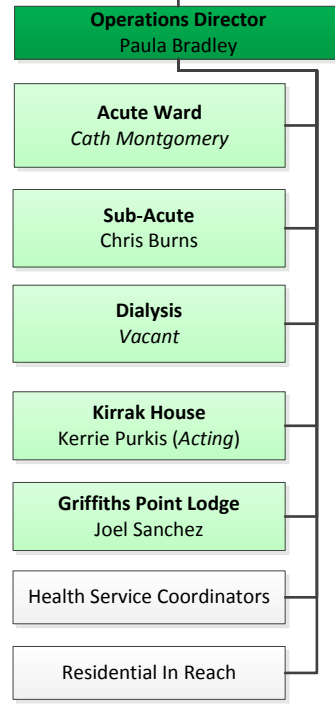
**Chief Executive Officer**  
Jan Child



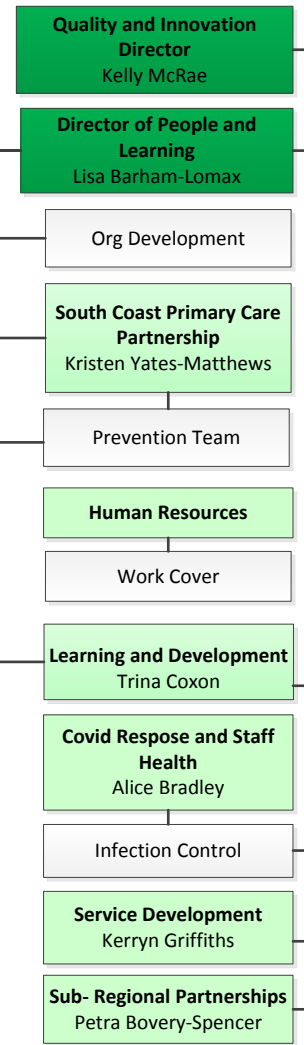
**PROFESSIONAL REPORTING**

Medicine: Renee Kelsall  
Nursing and Midwifery: Chris Henderson  
Allied Health: Sally Phillips

**Executive Director of Clinical Services**  
Christine Henderson



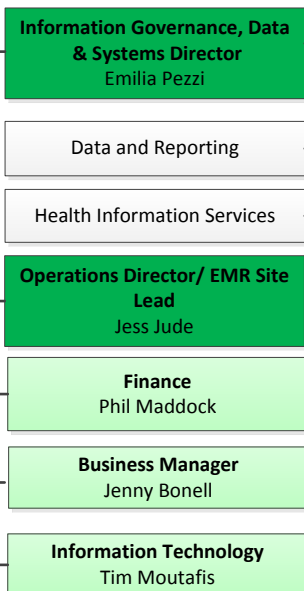
**Deputy CEO**  
Lou Sparkes



**Executive Director of Corporate Services**  
Brenton Button



**Chief Financial Officer**  
Shaun Brooks



**Chief Medical Officer**  
Renee Kelsall



**PORTFOLIOS**

- CEO**
  - Wonthaggi Hospital Expansion
  - Diversity
  - Partnering with Consumers
- Deputy CEO**
  - Service Development
  - Health Literacy
  - Clinical Partnerships
  - Phillip Island Community Hospital
  - Smoking Cessation
  - South Gippsland Coast Partnership
- CFO**
  - Standing Directions
  - Electronic Medical Record
  - Risk Management Framework
  - Legislative Compliance
  - Insurance
- CMO**
  - Medical Accreditation
  - Medical Credentialing & Scope of Practice
  - Clinical Governance
  - New Technology
  - Medico Legal
  - End of Life/ACP/VAD
  - Research
- EDCPS**
  - Sustainability
  - Staff Accommodation
  - Asset Management
  - Health Purchasing Victoria
  - Security
- EDCLS**
  - Telemedicine
  - National Disability Insurance Scheme (NDIS)
  - Primary Health Network (PHN)
  - Healthcare that counts